

## Nylon Pull Handle with Brass Inserts 137mm x M6









### NPBM6137

The combination of reinforced nylon (15% glass filled PA6) and machined brass inserts ensure this pull handle is both low weight, high strength and exceptional value. The matt black finish is nicely textured and feels tactile in the hand.

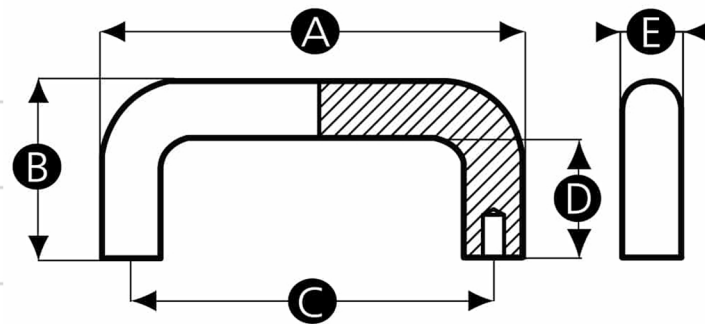
We have six variations of this pull handle to ensure most applications are catered for. From small doors, hatches and drawers on packaging equipment and electronics enclosures to flight cases, cabinets and conveyors.



### Technical Specifications

 Colour	Black
<b>B</b>  Height (mm)	50
<b>A</b>  Length (mm)	137
 Product Type	simple
 Thread Size (D1)	M6
<b>D</b>  Thread Length (L) (mm)	34
<b>E</b>  Handle Width (mm)	25
<b>C</b>  Distance Between Fixing Centres (mm)	120

### Dimensions



©Copyright  
Rencol