

Black Aluminium Bridge Handle 243mm with M5 Thread

AHM5243B

243mm black aluminium matt powder coat pull handle with female M5 threads.

A combination of cast aluminium construction, machined threads and matt black, powder coated finish ensure the handle maintains an exceptional balance between durability and low weight.

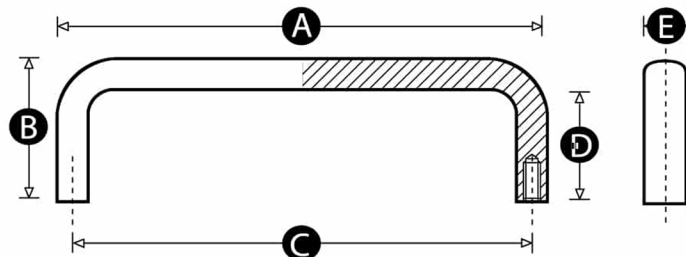
This is a popular handle in industrial settings. It is well suited to demanding environments and long, repeated use. It is often specified on processing and packaging equipment, on guards and drawers on heavy machinery, and inside construction equipment.



Technical Specifications

 Colour	Black
B  Height (mm)	40
A  Length (mm)	243
 Product Type	Bridge Handles
 Thread Size (D1)	M5
D  Thread Length (L) (mm)	32
E  Handle Width (mm)	12
C  Distance Between Fixing Centres (mm)	235

Dimensions



Copyright
 Rencol