

## Black Aluminium Bridge Handle 114mm x M6 Thread









### AHBM6114

A combination of cast aluminium construction, machined threads and matt black, powder coated finish ensure the handle maintains an exceptional balance between durability and low weight.

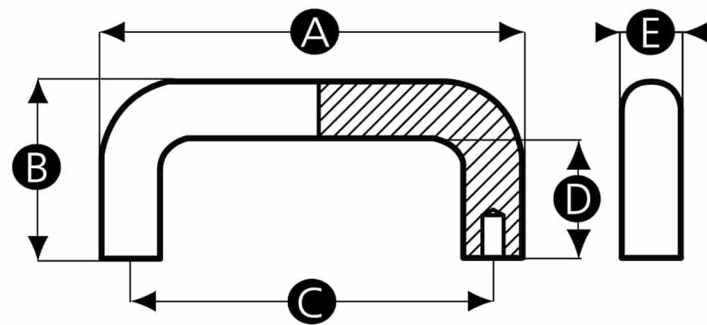
This is a popular handle in industrial settings. It is well suited to demanding environments and long, repeated use. It is often specified on processing and packaging equipment, on guard and drawers on heavy machinery, and inside construction equipment.



### Technical Specifications

 Colour	Black
<b>B</b>  Height (mm)	47
<b>A</b>  Length (mm)	114
 Product Type	simple
 Thread Size (D1)	M6
<b>D</b>  Thread Length (L) (mm)	33
<b>E</b>  Handle Width (mm)	20
<b>C</b>  Distance Between Fixing Centres (mm)	100

### Dimensions



©Copyright  
Rencol