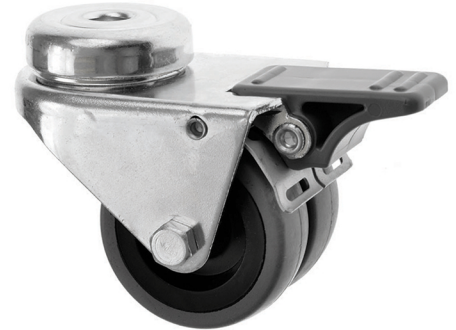


## 50mm Bolt Hole Castor with Brake Twin Grey Rubber Wheel

### 50-360-R-BH10/SWB

This 50mm twin wheeled industrial castor with an M10 bolt hole fitting for easy attachment to a wide range of light duty applications. These castors come with twin grey rubber wheels for ease of movement, and the zinc plated castor housing is strong and durable. The foot operated brake simultaneously brakes both the swivel head and the wheel.



### Technical Specifications

	Bearing Type	Plain
	Bolt Hole Size (mm)	10
	Colour	No
	Load Capacity (kg)	60
	Max Load Capacity of 4 Castors	180
	Product Type	Bolt Hole Castors
	Swivel Radius	84
	Thread Material	No
	Total Castor Height	72
	Wheel Colour	Grey
	Wheel Diameter(mm)	50
	Wheel Material	Grey Rubber

### Dimensions

