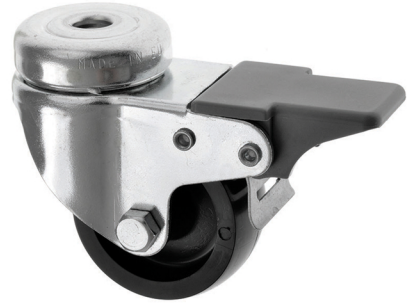









50mm M10 Bolt Hole Braked Castors Black Plastic Wheel

50-310-P/SWB

This 50mm light duty pressed steel swivel braked castors with 10mm bolt hole fitting and a black plastic wheel, overall height 73mm, load capacity 65kgs each, is suitable for a wide variety of light duty applications. The useful foot operated brake simultaneously brakes both the swivel head and the wheel.



Technical Specifications

	Bearing Type	Plain
	Bolt Hole Size (mm)	10
	Colour	No
	Load Capacity (kg)	65
	Max Load Capacity of 4 Castors	195
	Product Type	Bolt Hole Castors
	Swivel Radius	80
	Thread Material	No
	Total Castor Height	72
	Tread Width (mm)	22
	Wheel Centre	Black Polypropylene
	Wheel Colour	Black
	Wheel Diameter(mm)	50
	Wheel Material	Polypropylene

Dimensions

